

SAINT JEAN AND THE RECTORIES



To the left, the old rectory, sold as national good, under the French revolution during the confiscation of the Church goods.

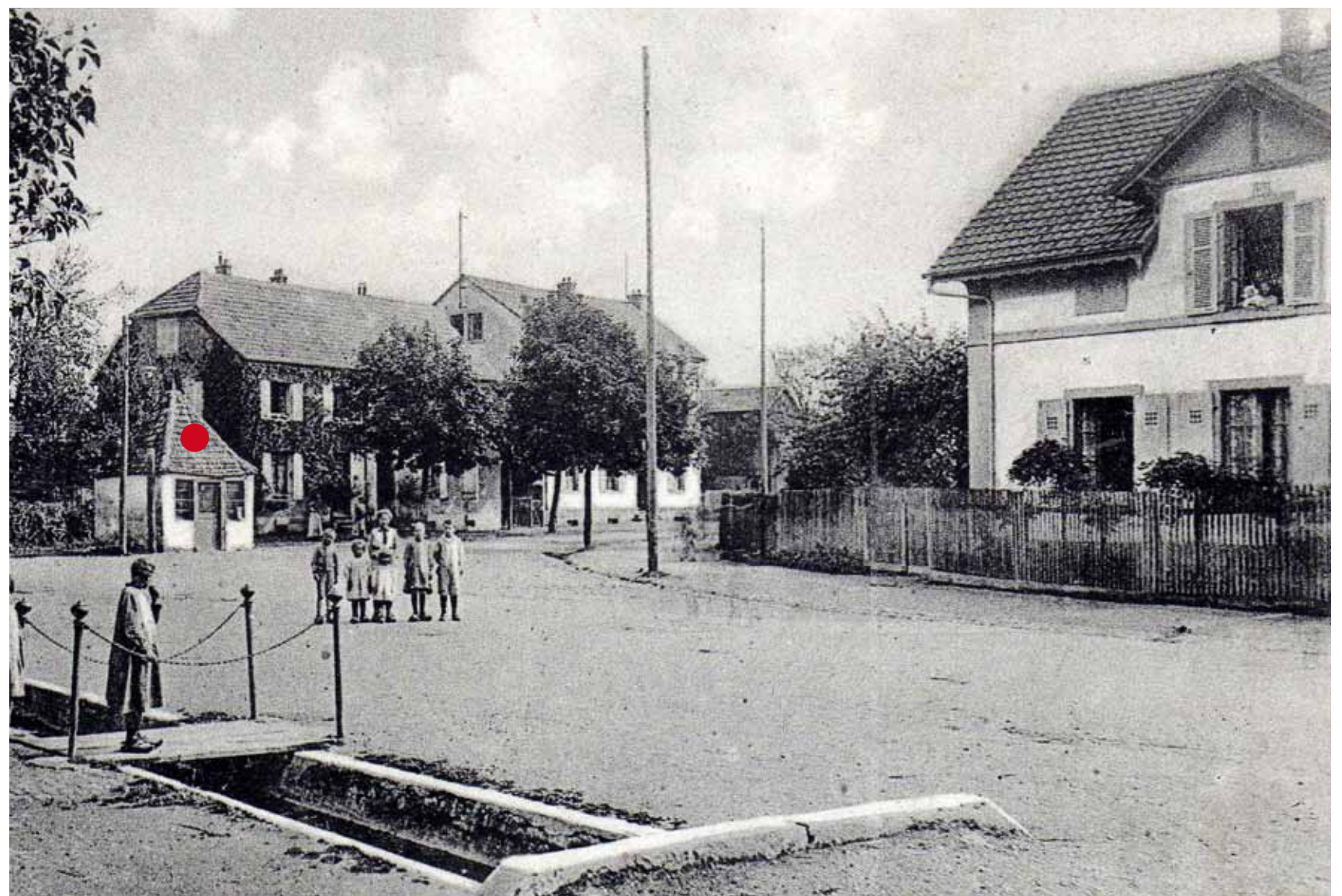


To the right, the present rectory, built in 1828, a time where priests were helped by vicars.

Since its renovation in 1986, the fountain, built in 1869, held the statue of Saint Jean Népomucène, which was in the Saint Jean Chapel, located at the end of the actual Saint Jean street, as shows the picture (the chapel is marked with a red point).

During World War I, the Rixheim people came to ask for the protection of this saint on the village and for the family up at the front. In 1920, this praying area, which was nearly in ruin and was encroaching on the road, was destroyed. This Saint Jean devotion was taken back on the war monument, inaugurated in 1925, near the place of the chapel.

The old statue was forgotten for a long time but was placed in 1986 on this fountain.



Pour avoir plus d'informations utilisez le flash-code.
Auf Deutsch nützen sie diesen Flash-Code.
In English, use Flash-Code.

